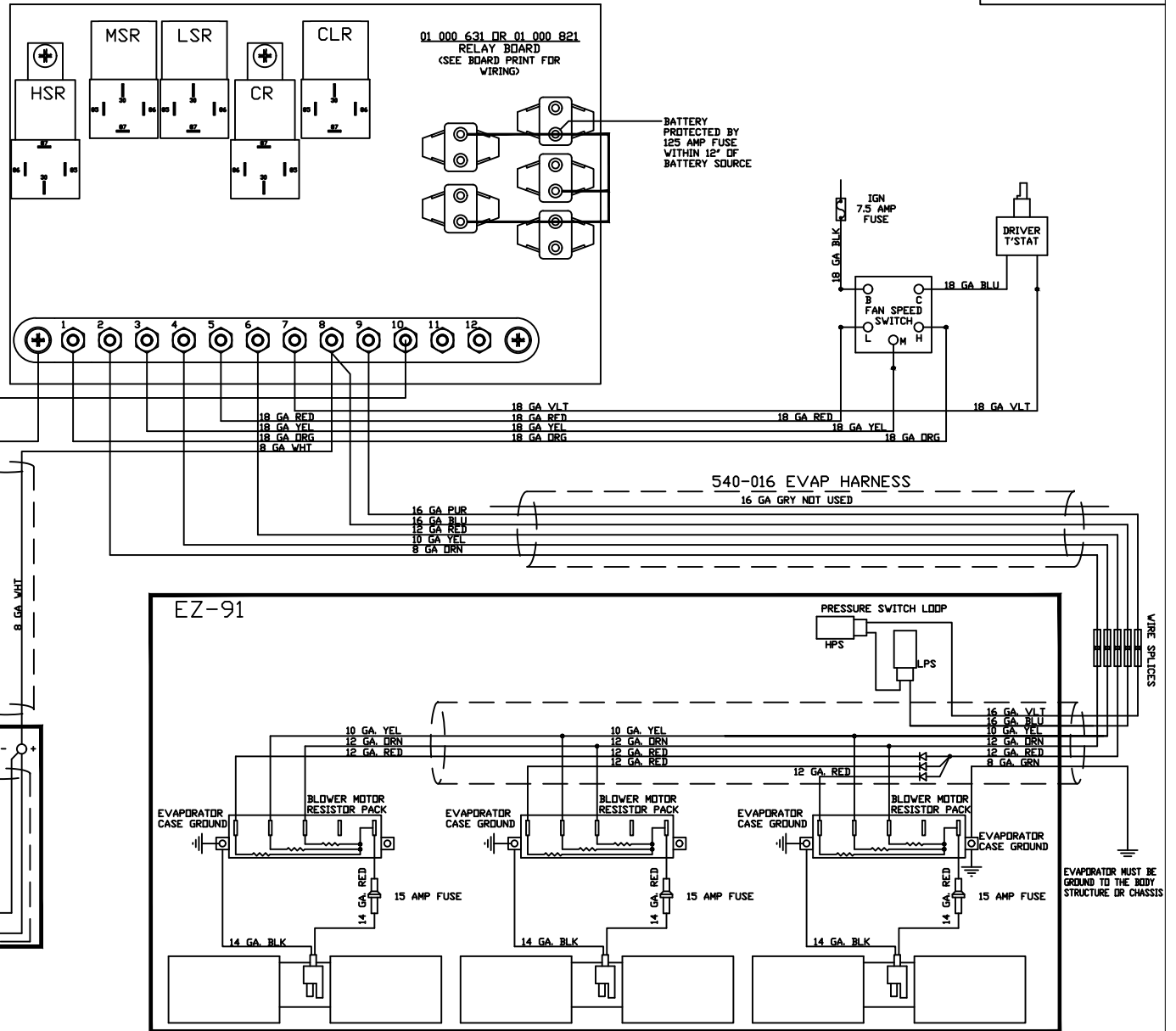
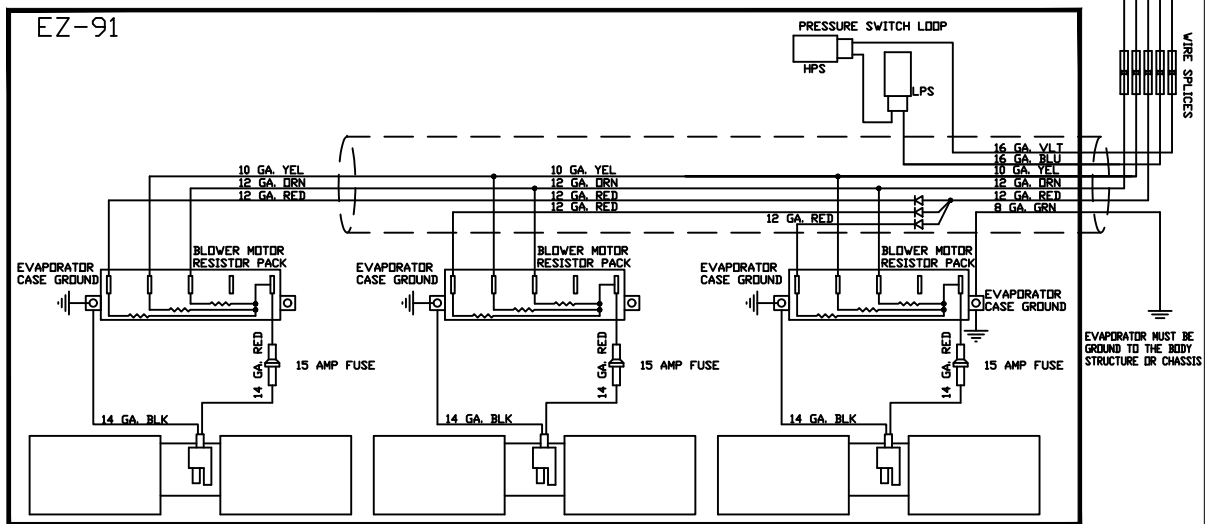
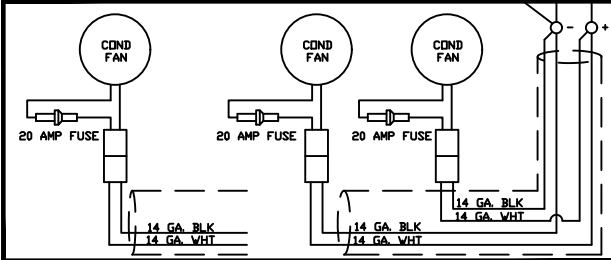


NOTES:
ELECTRICAL PANEL MUST BE MOUNTED IN A DRY LOCATION WITH AN AMBIENT TEMP UNDER 150° F AND PROPER VENTILATION.



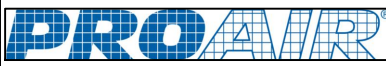
CS-3 / CR-3 CONDENSER



PROPRIETARY & CONFIDENTIAL. UNPUBLISHED WORK. COPYRIGHT PROTECTED PRO AIR, LLC. PRO AIR, LLC CLAIMS PROPRIETARY RIGHTS IN THE MATERIAL DISCLOSED HEREON. NEITHER THIS DRAWING NOR ANY REPRODUCTION OR PORTION THEREOF MAY BE DISTRIBUTED OR USED TO MANUFACTURE ANYTHING SHOWN HEREON WITHOUT PERMISSION IN WRITING FROM PROAIR, LLC.

REV. G

		SIGNATURES		DATE		TITLE:		PART NO. 40 000 400	
		DRAWN DAS		12/18/14		SCHEMATIC, WIRE		SCALE: 1" = 1' - 0"	
G 17-144		CEB 6/5/17		6/5/17		USAGE: ACT 913 HD		SIZE A	
F 16-037		CEB 2/12/16						SHEET 1 OF 1	
LET. NO.		BY DATE							



2900 C.R. 6 W ELKHART, IN 46514