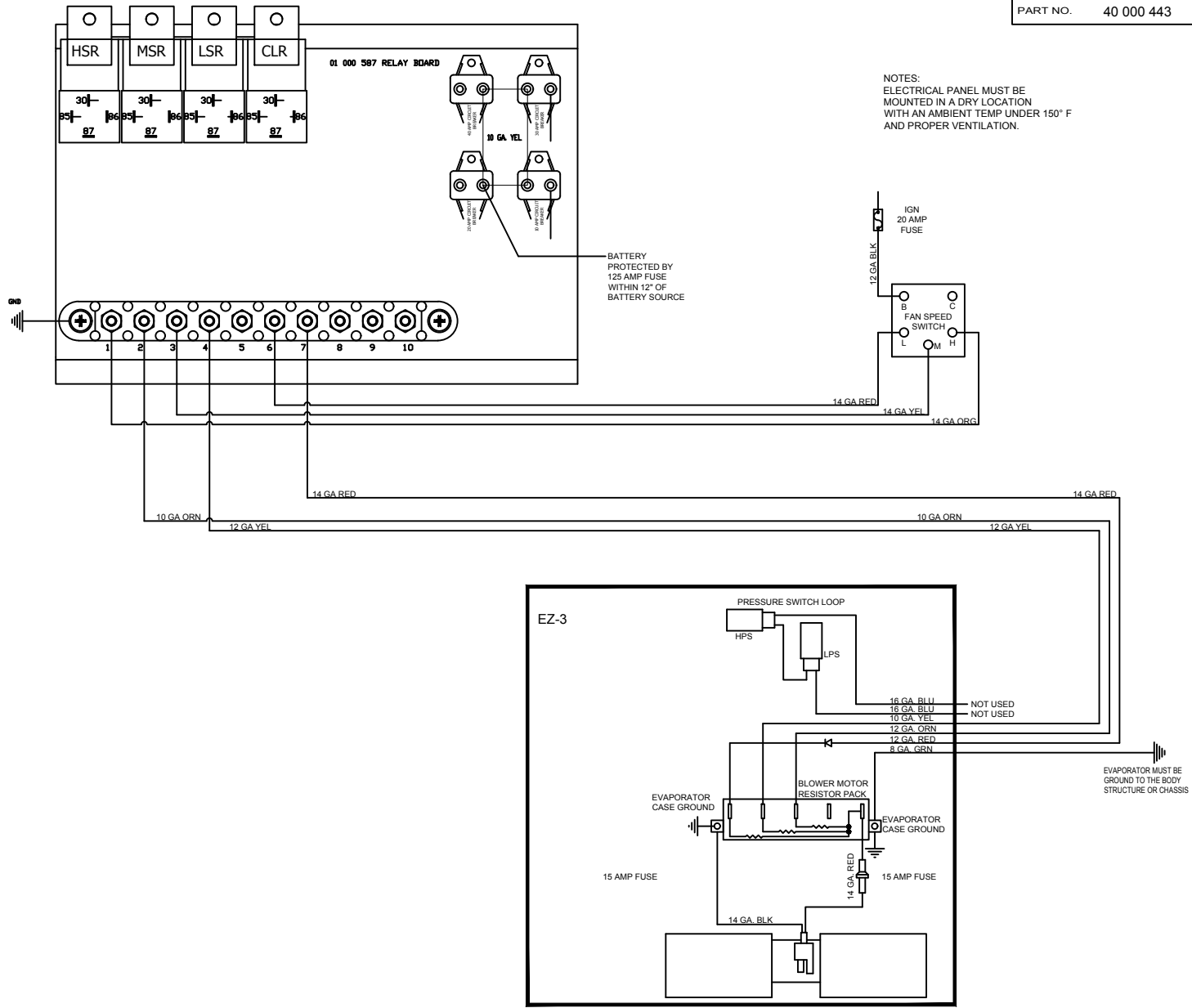


PART NO. 40 000 443



NOTES:
ELECTRICAL PANEL MUST BE MOUNTED IN A DRY LOCATION WITH AN AMBIENT TEMP UNDER 150° F AND PROPER VENTILATION.

BATTERY PROTECTED BY 125 AMP FUSE WITHIN 12" OF BATTERY SOURCE

EVAPORATOR MUST BE GROUND TO THE BODY STRUCTURE OR CHASSIS

PROPRIETARY & CONFIDENTIAL. UNPUBLISHED WORK COPYRIGHT PROTECTED PRO AIR LLC. PRO AIR, LLC CLAIMS PROPRIETARY RIGHTS IN THE MATERIAL DISCLOSED HEREON. NEITHER THIS DRAWING NOR ANY REPRODUCTION OR PORTION THEREOF MAY BE DISTRIBUTED OR USED TO MANUFACTURE ANYTHING SHOWN HEREON WITHOUT PERMISSION IN WRITING FROM PROAIR, LLC.

REV. C

LET.	NO.	REVISION	BY	DATE	APPROVED
C	16-242	UPDATE EZ-3	CEB	8/22/16	
B	16-037	UPDATE BOARD	CEB	2/12/16	
A	13-118	PROTO ISSUE	MRM	5/20/13	

SIGNATURES		DATE
DRAWN	M.R.M.	5/20/13
CHECKED	[Signature]	8/22/16
APPROVED	[Signature]	



TITLE: SCHEMATIC, WIRE
 USAGE: ACT 30T W/OEM COND.

PART NO. 40 000 443
 SCALE: 3/8"=1" SIZE A
 SHEET 1 OF 1