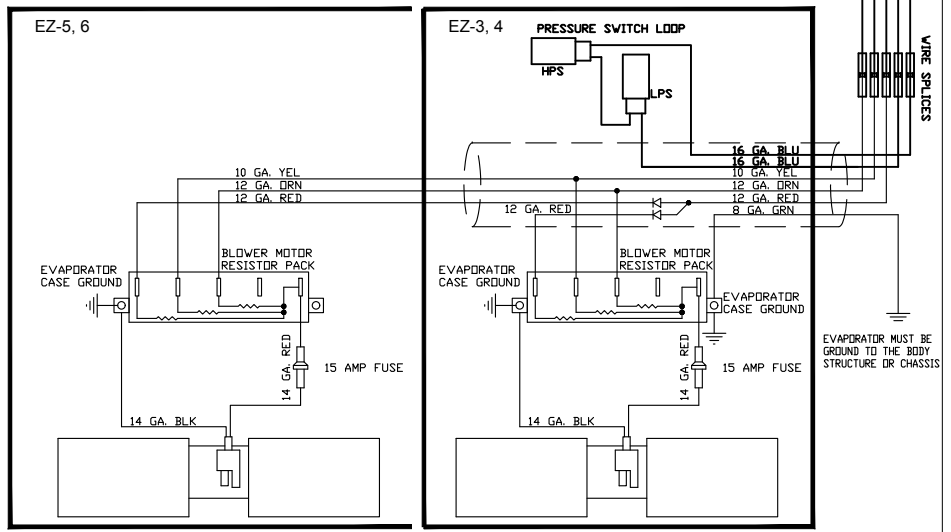
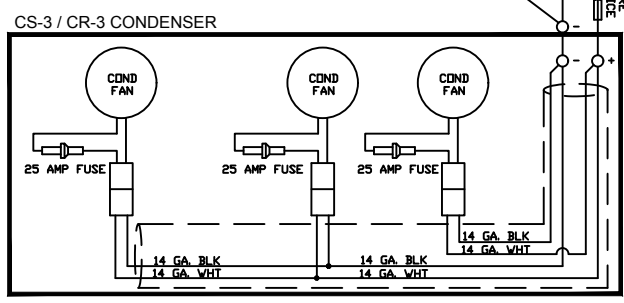
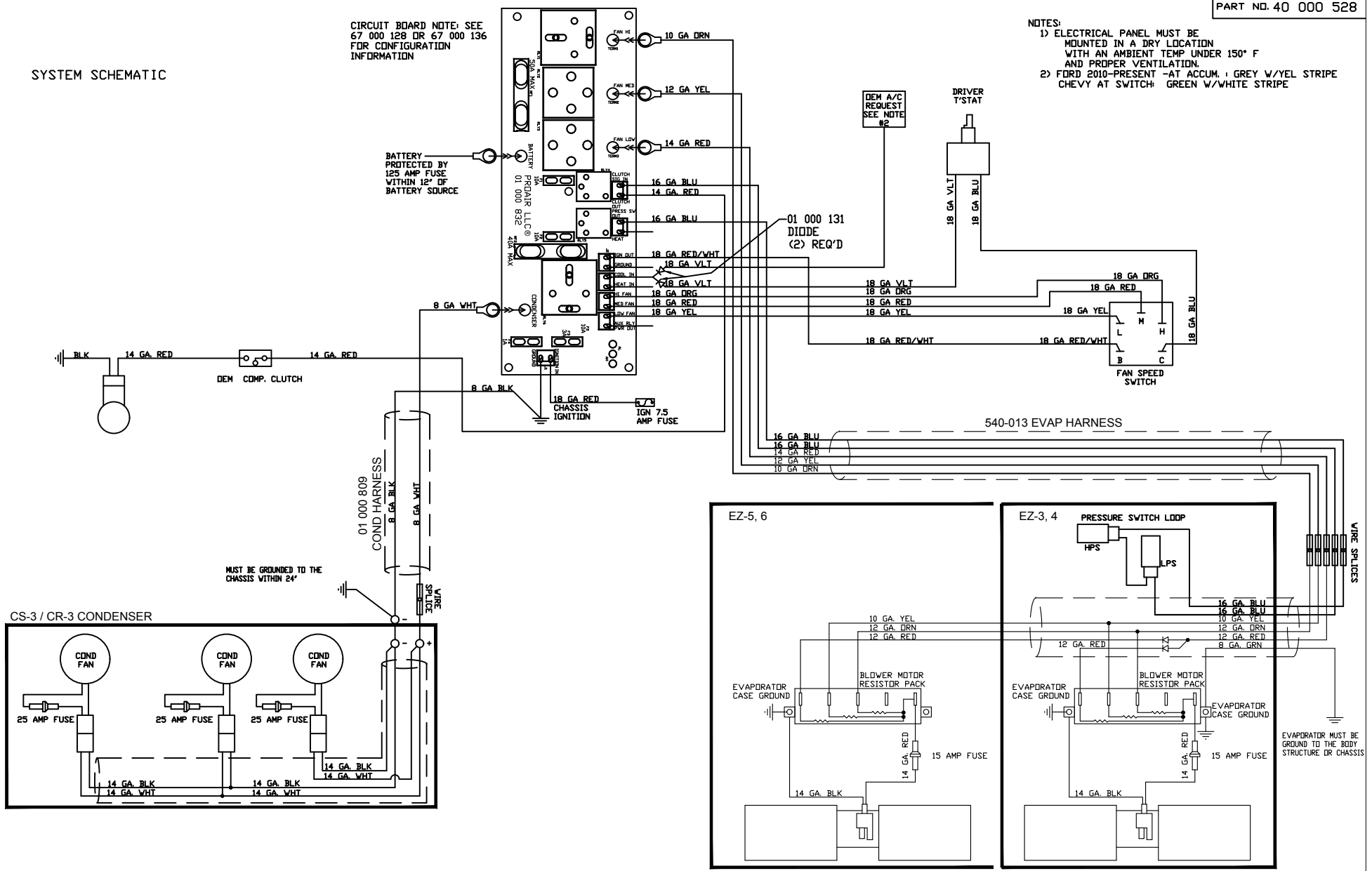


SYSTEM SCHEMATIC

CIRCUIT BOARD NOTE: SEE 67 000 128 OR 67 000 136 FOR CONFIGURATION INFORMATION

- NOTES:
 1) ELECTRICAL PANEL MUST BE MOUNTED IN A DRY LOCATION WITH AN AMBIENT TEMP UNDER 150° F AND PROPER VENTILATION.
 2) FORD 2010-PRESENT -AT ACCUM. : GREY W/YEL STRIPE CHEVY AT SWITCH: GREEN W/WHITE STRIPE



PROPRIETARY & CONFIDENTIAL. UNPUBLISHED WORK. COPYRIGHT PROTECTED PRO AIR LLC. PRO AIR, LLC CLAIMS PROPRIETARY RIGHTS IN THE MATERIAL DISCLOSED HEREON. NEITHER THIS DRAWING NOR ANY REPRODUCTION OR PORTION THEREOF MAY BE DISTRIBUTED OR USED TO MANUFACTURE ANYTHING SHOWN HEREON WITHOUT PERMISSION IN WRITING FROM PROAIR, LLC.

LET.	NO.	REVISION	BY	DATE	SIGNATURES	DATE	TITLE	PART NO.
D	17-144	EVAP AND COND UPDATE	CEB	6/5/17	DRAWN DAS	1/14/15	SCHEMATIC, WIRE	40 000 528
C	16-242	EVAP UPDATE	CEB	8/22/16	CHECKED RAI	6/5/17		
B	16-045	UPDATE BOARD	CEB	2/18/16				
A	15-041	RELEASED TO PRODUCTION	MRM	11/24/15				
		REVISION						

SCALE: 1" = 1' - 0" SIZE A

SHEET 1 OF 1

ACT 35T 40T 50T

2900 C.R. 6 W ELKHART, IN 46514