

PROAIR®



INSTALLATION INSTRUCTIONS

FOR

110 Condenser

3-Fan Unit for 170 Sprinter, Single Wheel

Part Number 31 000 034

Corporate Headquarters ProAir, LLC

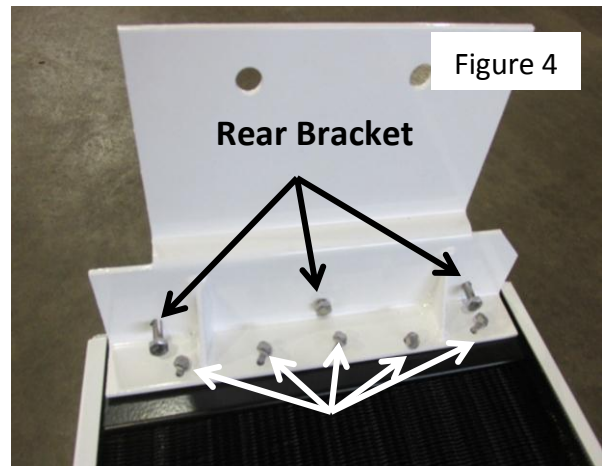
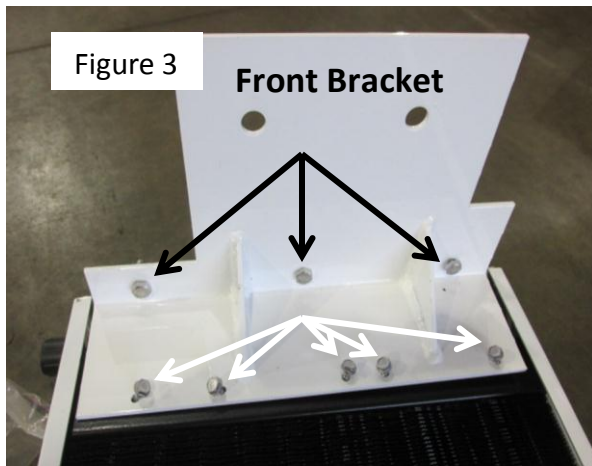
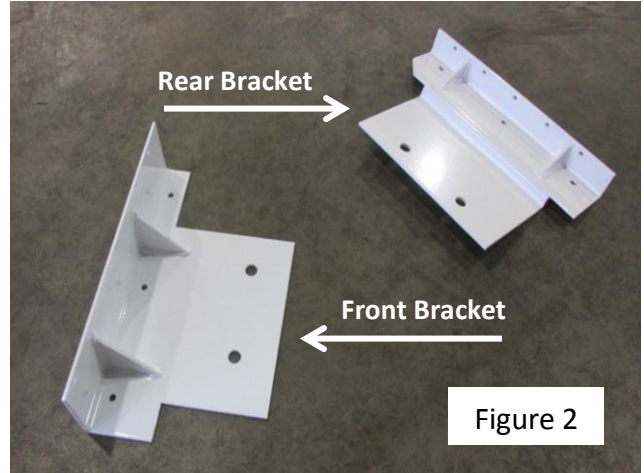
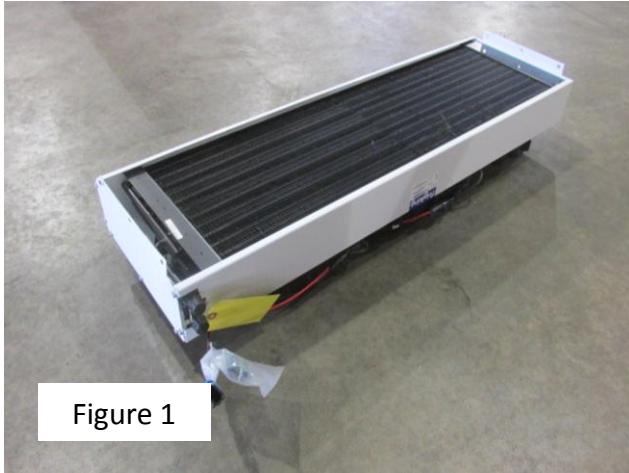
28731 County Road 6; Elkhart, IN 46514

Phone: (574) 264-5494; Toll Free: 800-338-8544; Fax: (574) 264-2194

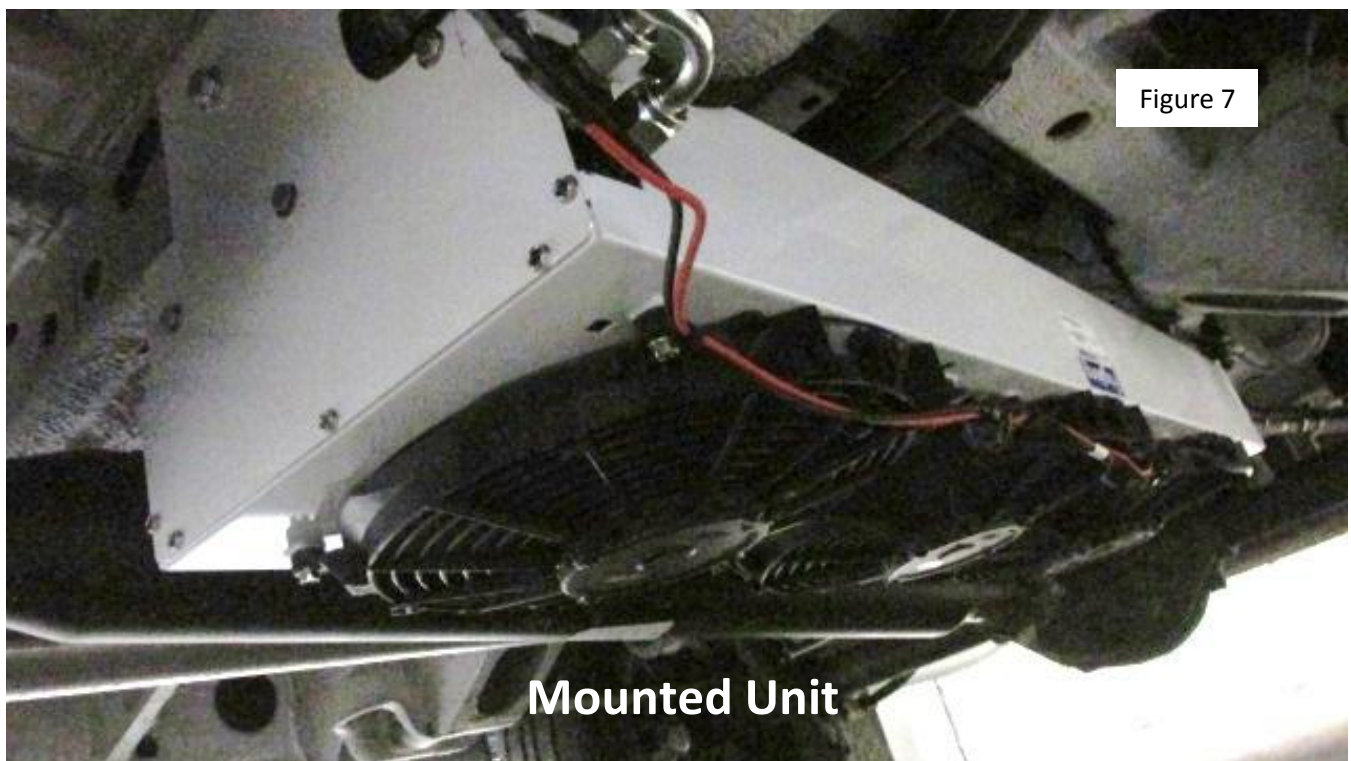
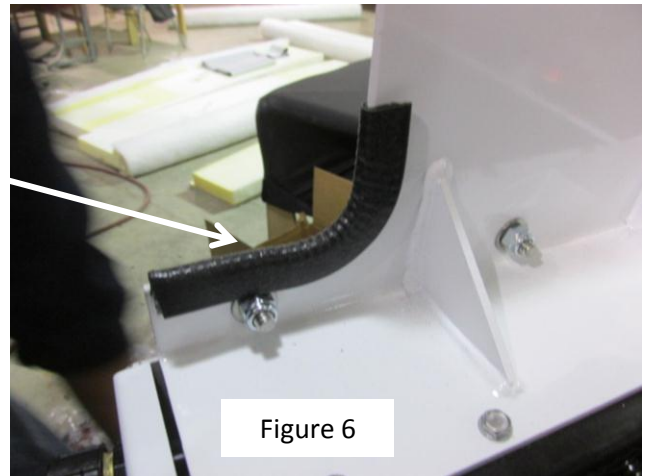
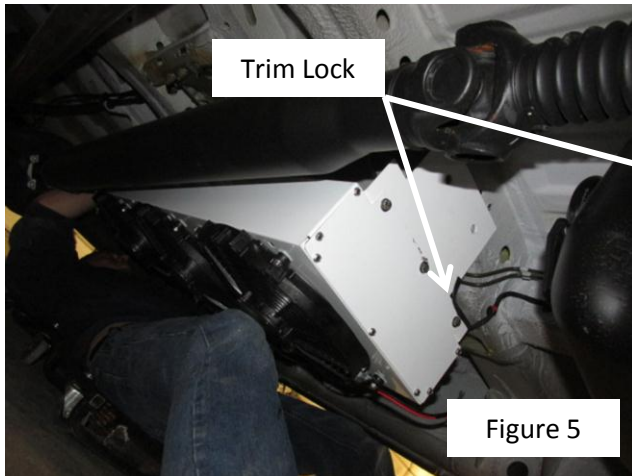
PARTS LIST

Item #	Part #	Qty	Description
1	02 000 023	1	Trim Lock
2	02 000 218	8	Washer, 7/16 SAE Flat Zinc
3	02 000 279	4	Nut, 7/16-14 Nylon Lock
4	02 000 283	6	Nut, 1/4-20 Nylon Lock
5	02 000 342	2	Bolt, 7/16-14x4 Grade 5 E-Coa
6	02 000 380	6	Bolt, 1/4-20 x 3/4 Stainless Steel
7	02 000 381	12	Washer, 1/4 Flat Stainless Steel
8	02 000 416	1	Bolt, 7//16-14 x 5 1/2
9	02 000 417	1	Bolt, 7/16-14 x 6 1/2
10	02 000 543	10	Screw, 10 x 1/2 Hex Washer Tek Stainless Steel
11	06 000 709	1	Bracket, Condenser Mount Sprinter LWB Front
12	06 000 710	1	Bracket, Condenser Mount Sprinter LWB Rear
13	09 000 246	1	Installation Instructions, 07LWB Sprinter Bracket
14	31 000 034	1	Frigiking Condenser 110 Sprinter LWB SW

1. Attach the brackets to the Condenser (31 000 034)(Figure 1). Bracket 06 000 709 is used on the end of the Condenser facing the front of the vehicle (gas port end) while bracket 06 000 710 is on the rear side (Figure 2). Use screws 02 000 543 (white arrows), five on each bracket, and bolts 02 000 380 (black arrows), three per bracket, with washers 02 000 381 on each side of the bracket and nuts 02 000 283 (Figures 3 & 4).



2. Position the Condenser under the vehicle between two chassis cross members (Figure 5). Be careful not to place it near any OEM equipment such as brake lines. Trim lock 02 000 023 is provided to trim bracket edges to protect the lines (Figure 6) when needed. Hold the Condenser in place, mark holes and drill 1/2" holes. Mount the unit using bolts 02 000 342 (rear of unit, both sides), bolt 02 000 416 (front of unit, passenger side), bolt 02 000 417 (front of unit, driver side), washers 02 000 218, one on each side of the bracket, and nuts 02 000 279.



PARTS



02 000 023



02 000 218



02 000 279



02 000 283



02 000 342



02 000 380



02 000 381



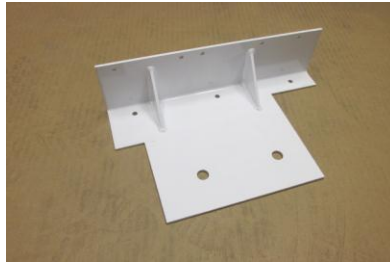
02 000 416



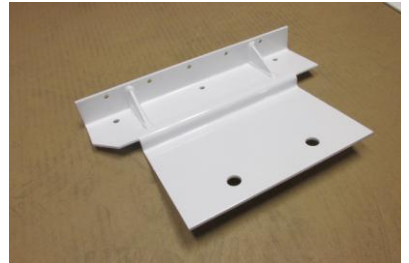
02 000 417



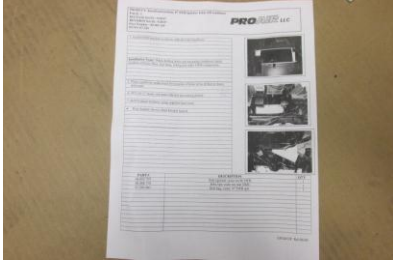
02 000 543



06 000 709



06 000 710



09 000 246



31 000 034